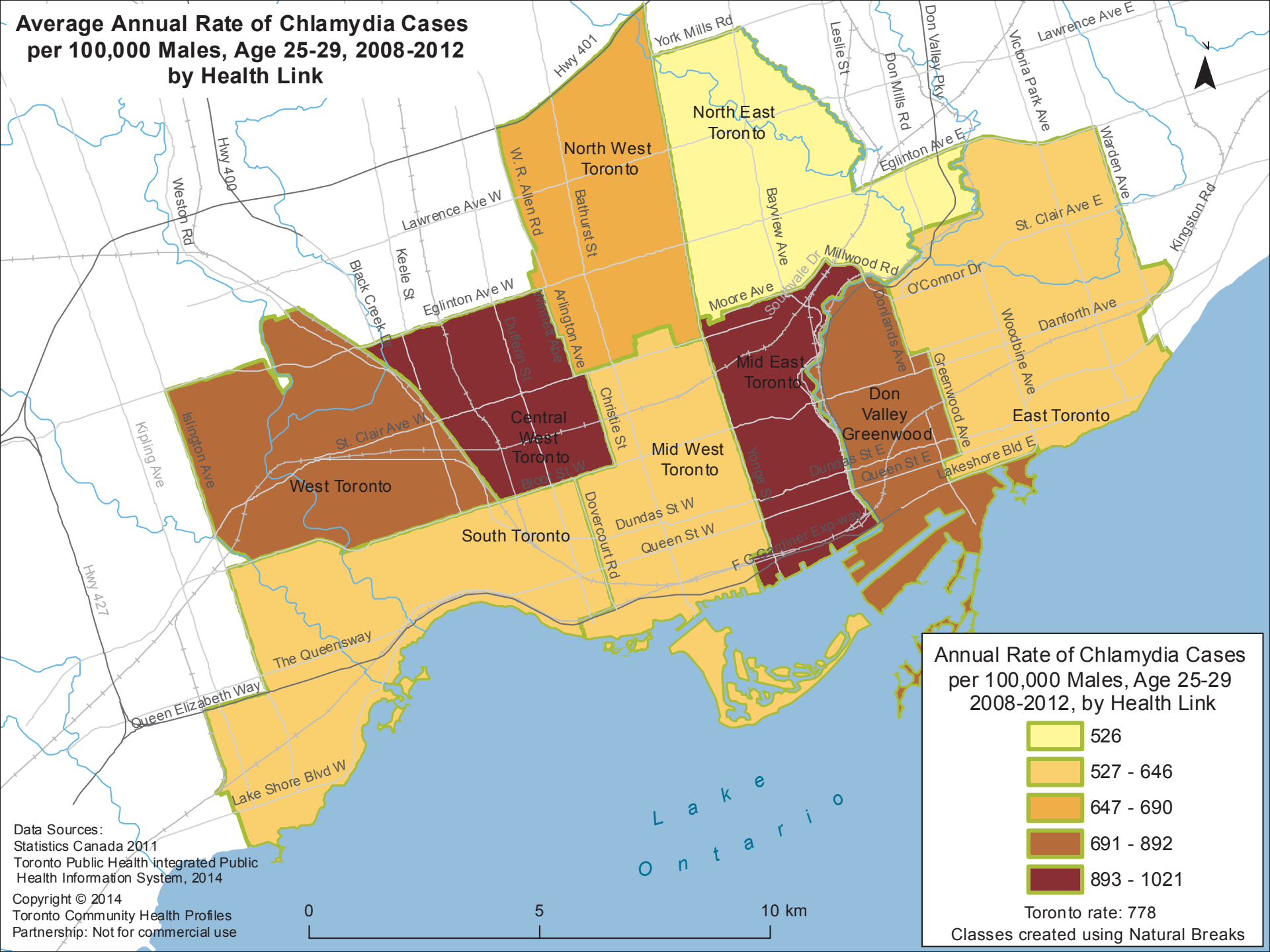


Average Annual Rate of Chlamydia Cases per 100,000 Males, Age 25-29, 2008-2012 by Health Link



Annual Rate of Chlamydia Cases per 100,000 Males, Age 25-29, 2008-2012, by Health Link

- 526
- 527 - 646
- 647 - 690
- 691 - 892
- 893 - 1021

Toronto rate: 778
Classes created using Natural Breaks

Data Sources:
 Statistics Canada 2011
 Toronto Public Health Integrated Public Health Information System, 2014
 Copyright © 2014
 Toronto Community Health Profiles
 Partnership: Not for commercial use

