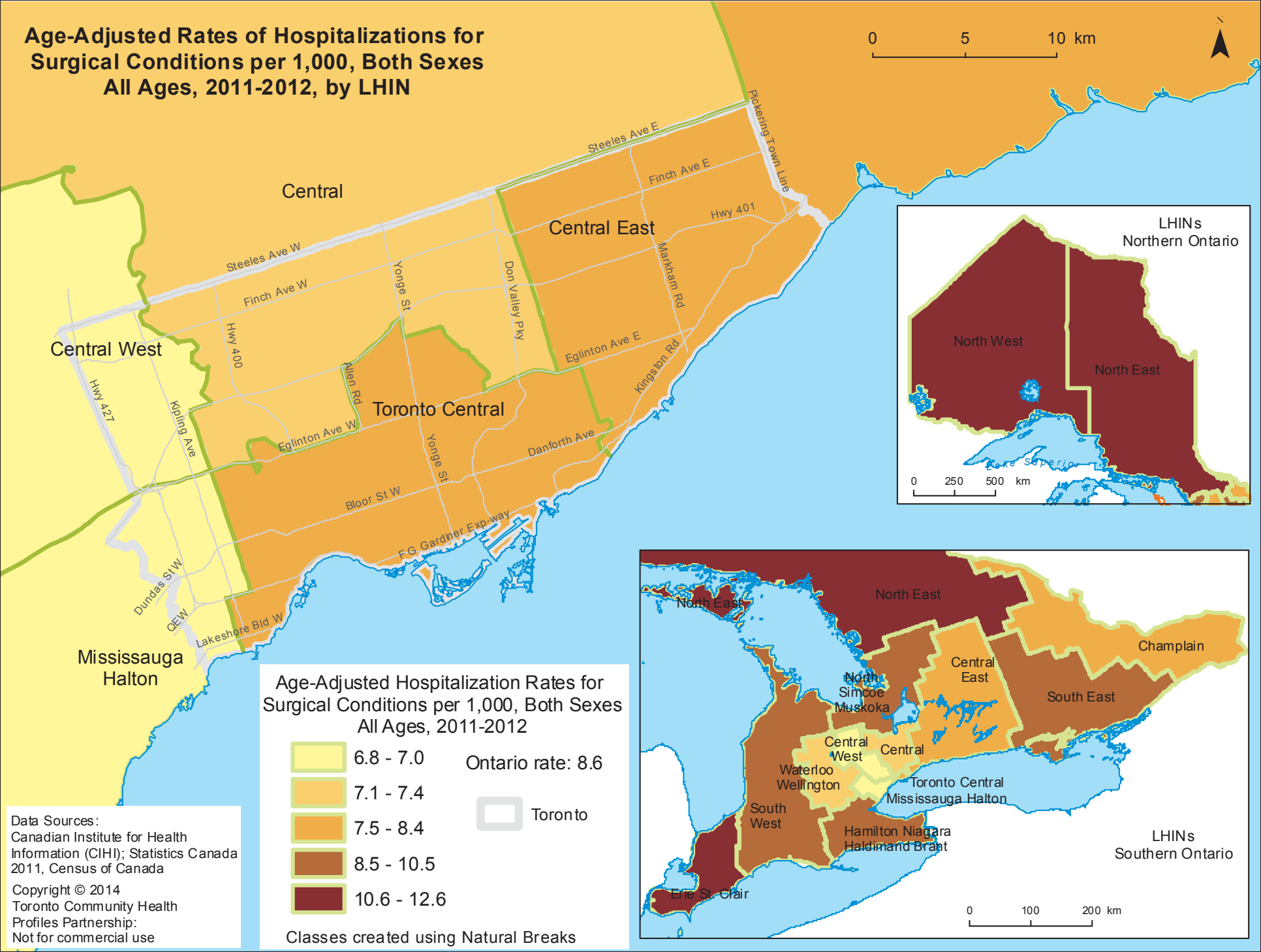


Age-Adjusted Rates of Hospitalizations for Surgical Conditions per 1,000, Both Sexes All Ages, 2011-2012, by LHIN

0 5 10 km



Central
Central East
Central West
Toronto Central
Mississauga Halton

Steeles Ave E
Finch Ave E
Hwy 401
Markham Rd
Eglinton Ave E
Kingslon Rd
Danforth Ave
Yonge St
Don Valley Pkwy
Steeles Ave W
Finch Ave W
Hwy 400
Eglinton Ave W
Bloor St W
Yonge St
F.G. Gardner Exp-way
Kipling Ave
Hwy 427
Dundas St W
QE W
Lakeshore Blvd W

Age-Adjusted Hospitalization Rates for Surgical Conditions per 1,000, Both Sexes All Ages, 2011-2012

- 6.8 - 7.0
 - 7.1 - 7.4
 - 7.5 - 8.4
 - 8.5 - 10.5
 - 10.6 - 12.6
- Ontario rate: 8.6
- Toronto

Data Sources:
Canadian Institute for Health Information (CIHI); Statistics Canada 2011, Census of Canada
Copyright © 2014
Toronto Community Health Profiles Partnership:
Not for commercial use

Classes created using Natural Breaks

