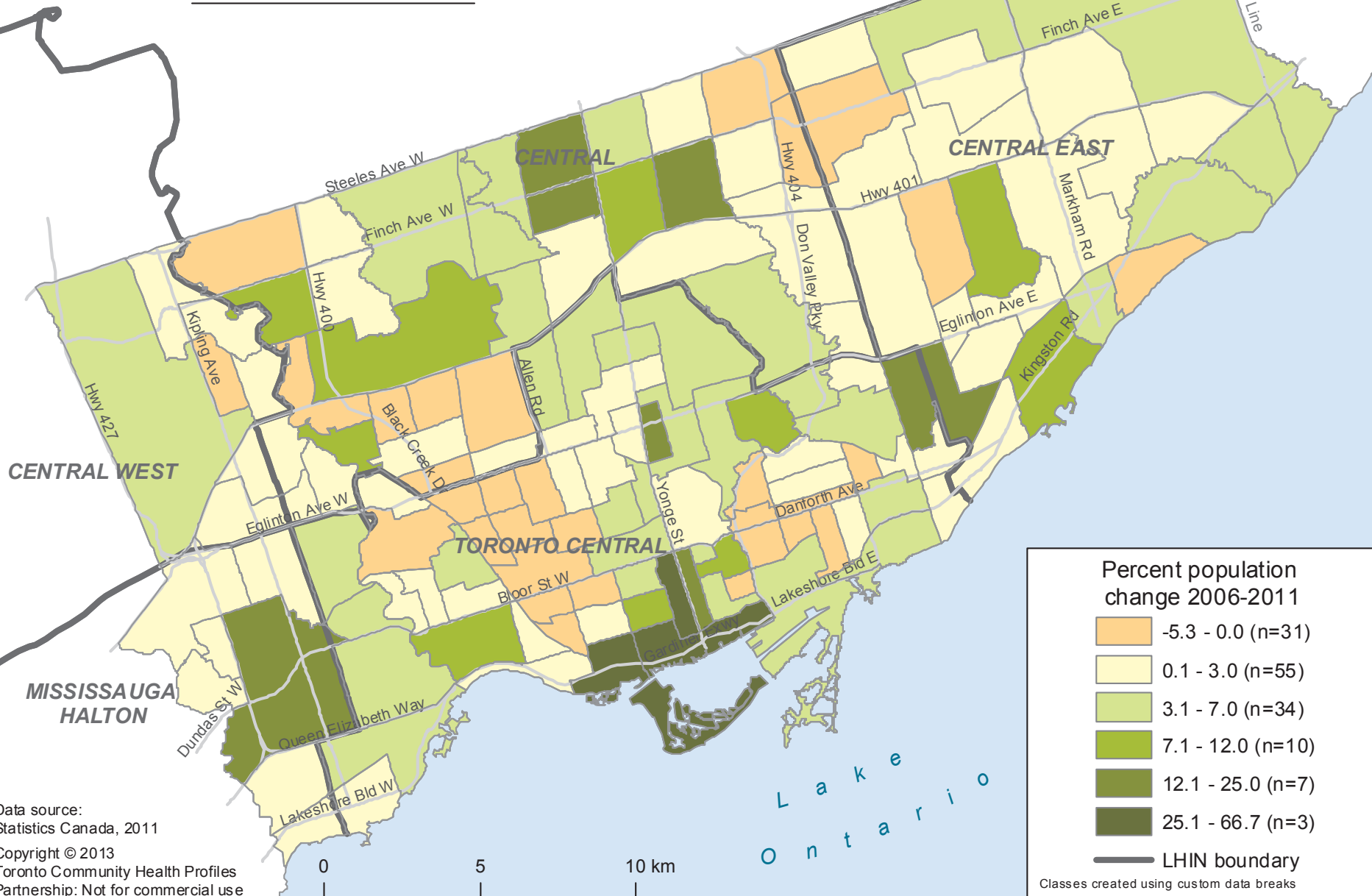


Population change, 2006-2011

Toronto Neighbourhoods



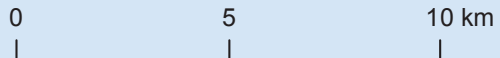
Percent population change 2006-2011

	-5.3 - 0.0 (n=31)
	0.1 - 3.0 (n=55)
	3.1 - 7.0 (n=34)
	7.1 - 12.0 (n=10)
	12.1 - 25.0 (n=7)
	25.1 - 66.7 (n=3)

LHIN boundary

Classes created using custom data breaks

Data source:
 Statistics Canada, 2011
 Copyright © 2013
 Toronto Community Health Profiles
 Partnership: Not for commercial use



L a k e
 O n t a r i o

