

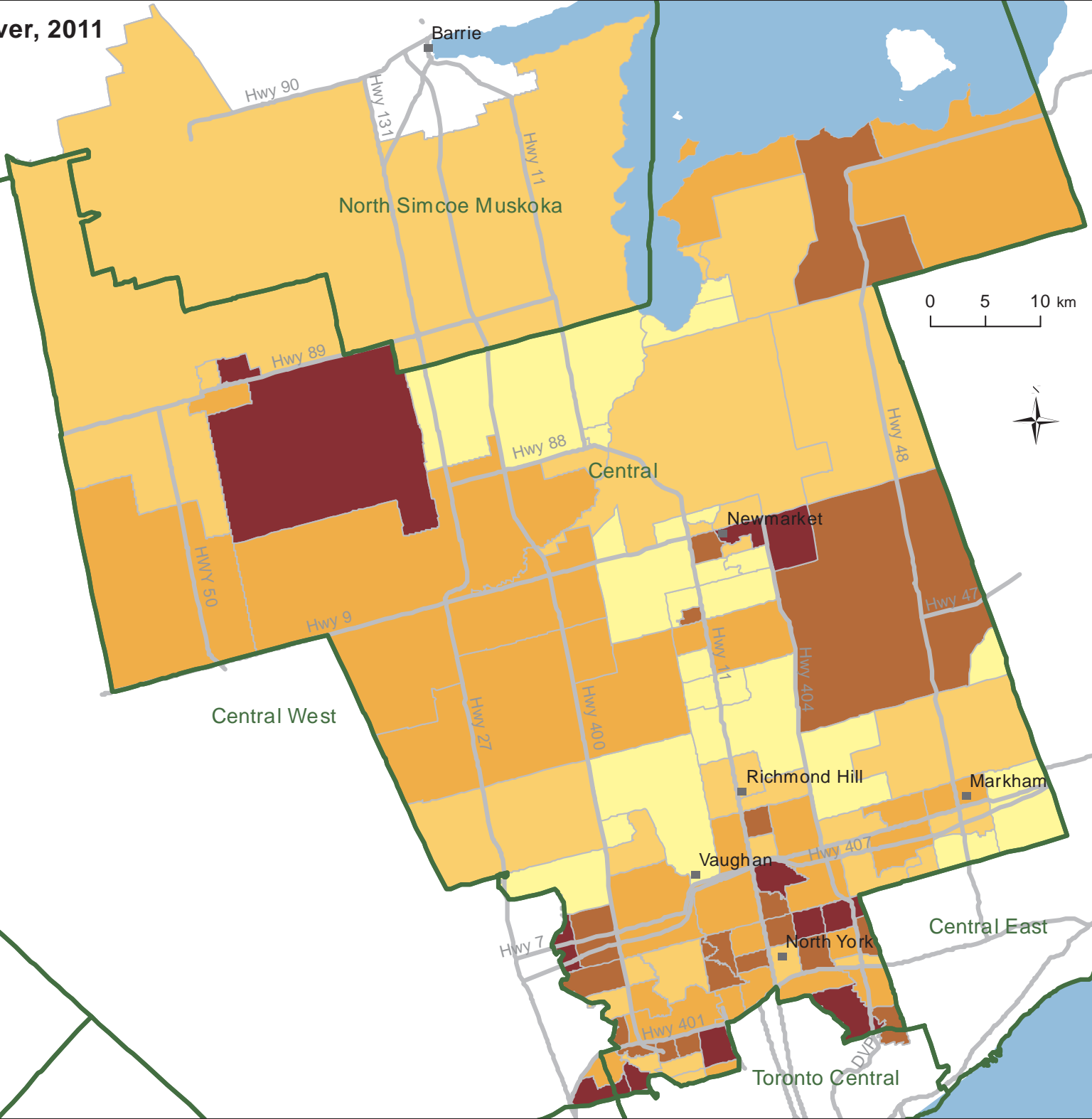
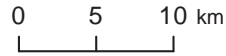
# Population Aged 65 And Over, 2011 in Central LHIN by Neighbourhood

Population 65 years of age or older as a percentage of the total population, 2011

- 4.8 - 9.3 (n=20)
- 9.4 - 13.0 (n=29)
- 13.1 - 16.1 (n=28)
- 16.2 - 20.0 (n=18)
- 20.1 - 26.5 (n=10)

LHIN

Classes created using Natural Breaks



Data Sources:  
2011 Census, Statistics Canada  
Copyright © 2016  
Ontario Health Profiles  
Partnership  
Not for commercial use