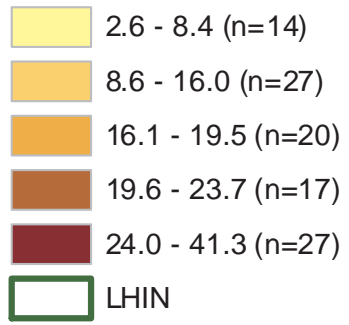
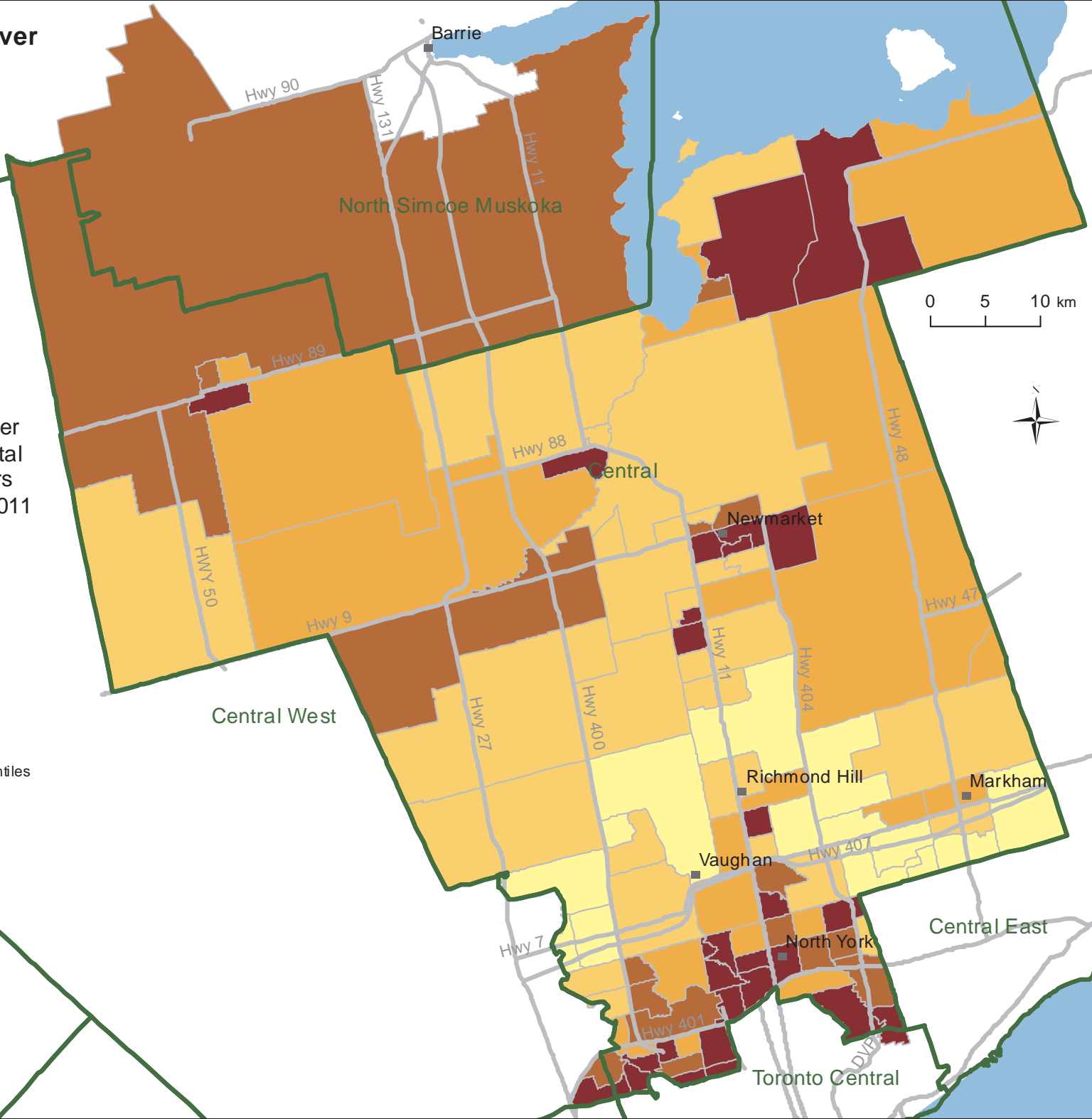


Population Aged 65 And Over Living Alone, 2011 in Central LHIN by Neighbourhood

Population 65 years of age or older living alone as a percentage of total number of persons aged 65 years and over in private households, 2011



Classes created using Population-Weighted Quintiles



Data Sources:
 2011 Census, Statistics Canada
 Copyright © 2016
 Ontario Health Profiles
 Partnership
 Not for commercial use