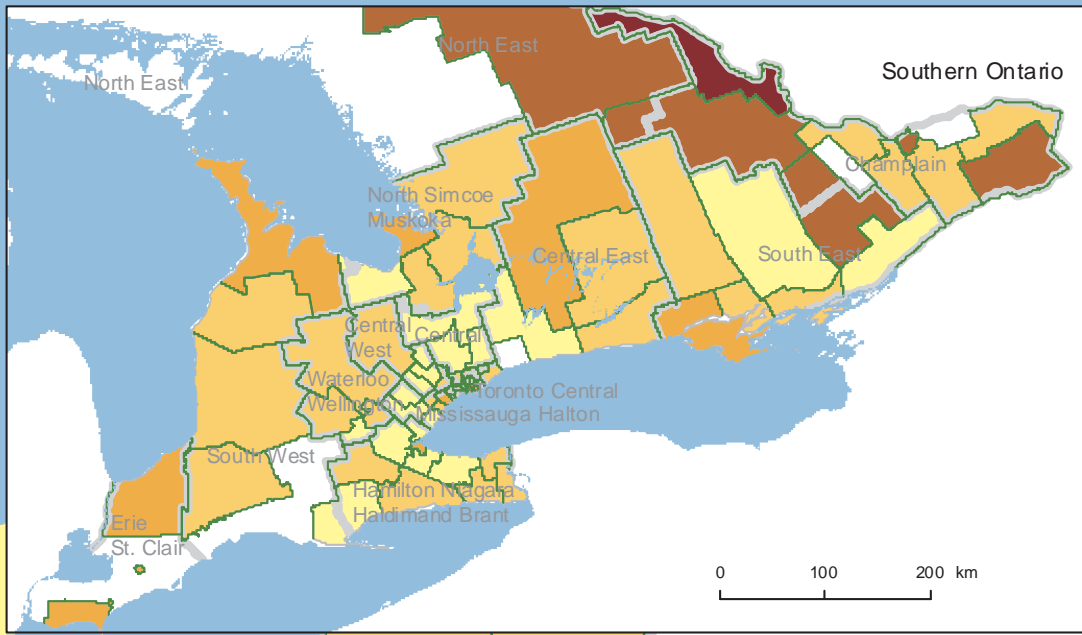
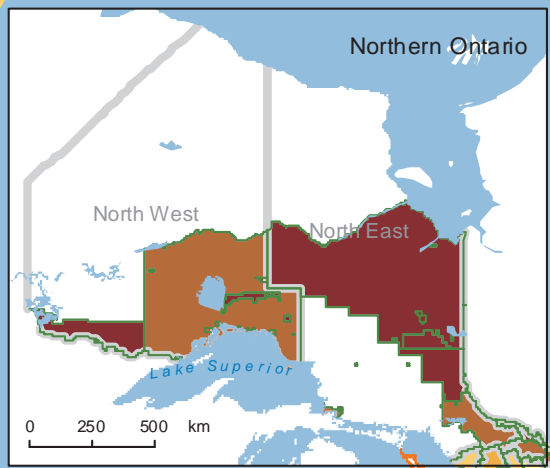
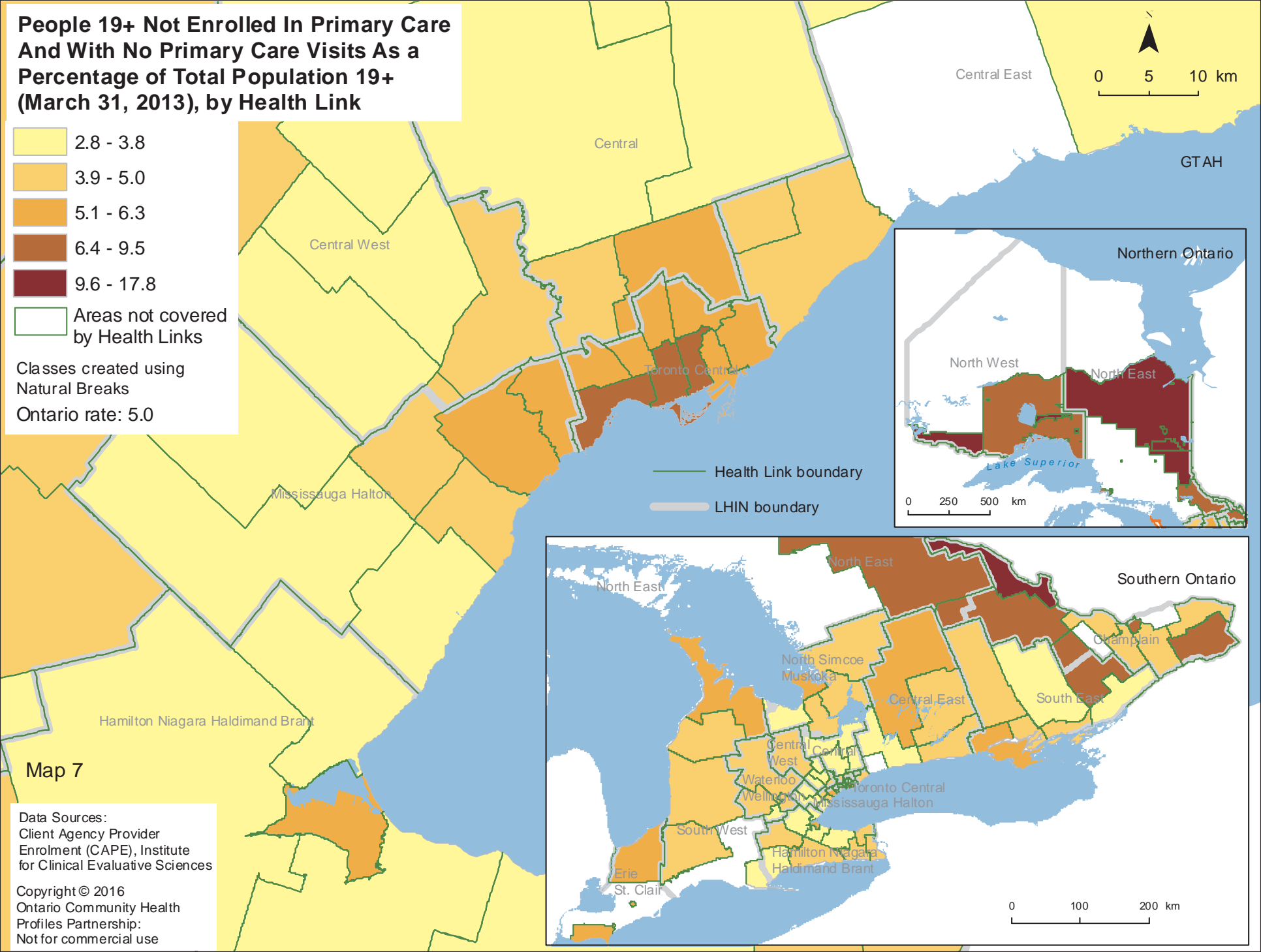
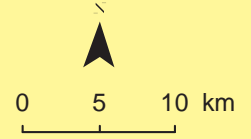


# People 19+ Not Enrolled In Primary Care And With No Primary Care Visits As a Percentage of Total Population 19+ (March 31, 2013), by Health Link

- 2.8 - 3.8
- 3.9 - 5.0
- 5.1 - 6.3
- 6.4 - 9.5
- 9.6 - 17.8
- Areas not covered by Health Links

Classes created using Natural Breaks  
Ontario rate: 5.0



Map 7

Data Sources:  
Client Agency Provider  
Enrolment (CAPE), Institute  
for Clinical Evaluative Sciences

Copyright © 2016  
Ontario Community Health  
Profiles Partnership:  
Not for commercial use