

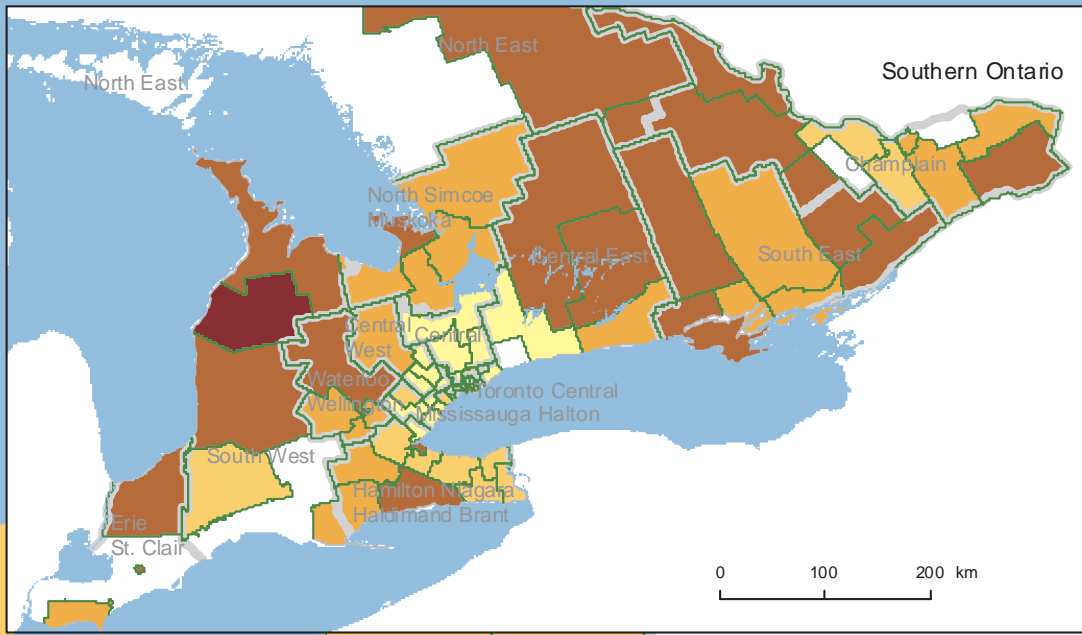
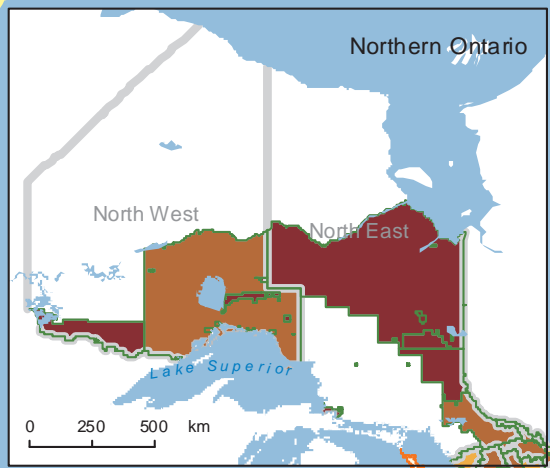
People 19+ With No Primary Care Visits As a Percentage of Total Population 19+ (March 31, 2013), by Health Link

- 6.9 - 8.8
- 8.9 - 11.3
- 11.4 - 13.2
- 13.3 - 16.7
- 16.8 - 24.8
- Areas not covered by Health Links

Classes created using Natural Breaks
 Ontario rate: 11.0

Central East

0 5 10 km



Map 3

Data Sources:
 Client Agency Provider
 Enrolment (CAPE), Institute
 for Clinical Evaluative Sciences

Copyright © 2016
 Ontario Community Health
 Profiles Partnership:
 Not for commercial use