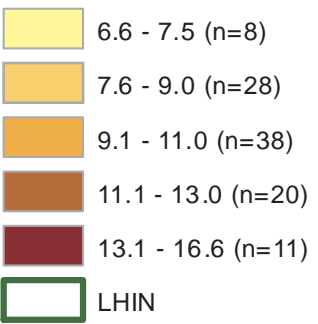
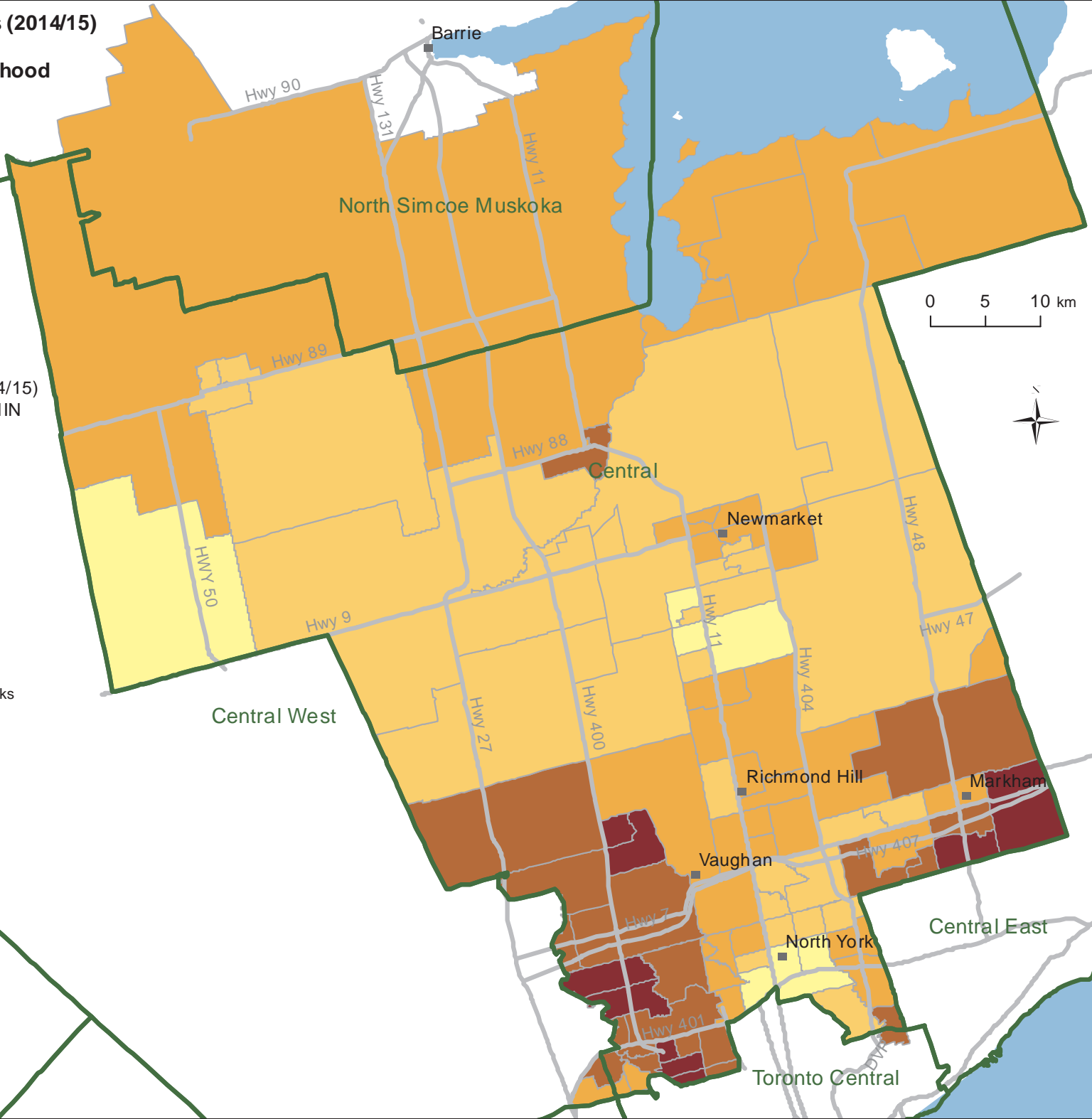
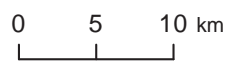


**Age-Standardized Rate of Diabetes (2014/15)
Both Sexes, All Ages 20+
in Central LHIN, by Neighbourhood**

Age-Standardized Rate of Diabetes (2014/15)
Both Sexes, All Ages 20+, in Central LHIN



Classes created using rounded Natural Breaks



Data Sources:
2015 Ontario Diabetes Database
2015 Registered Persons Database
Copyright © 2016
Ontario Community Health Profiles
Partnership
Not for commercial use