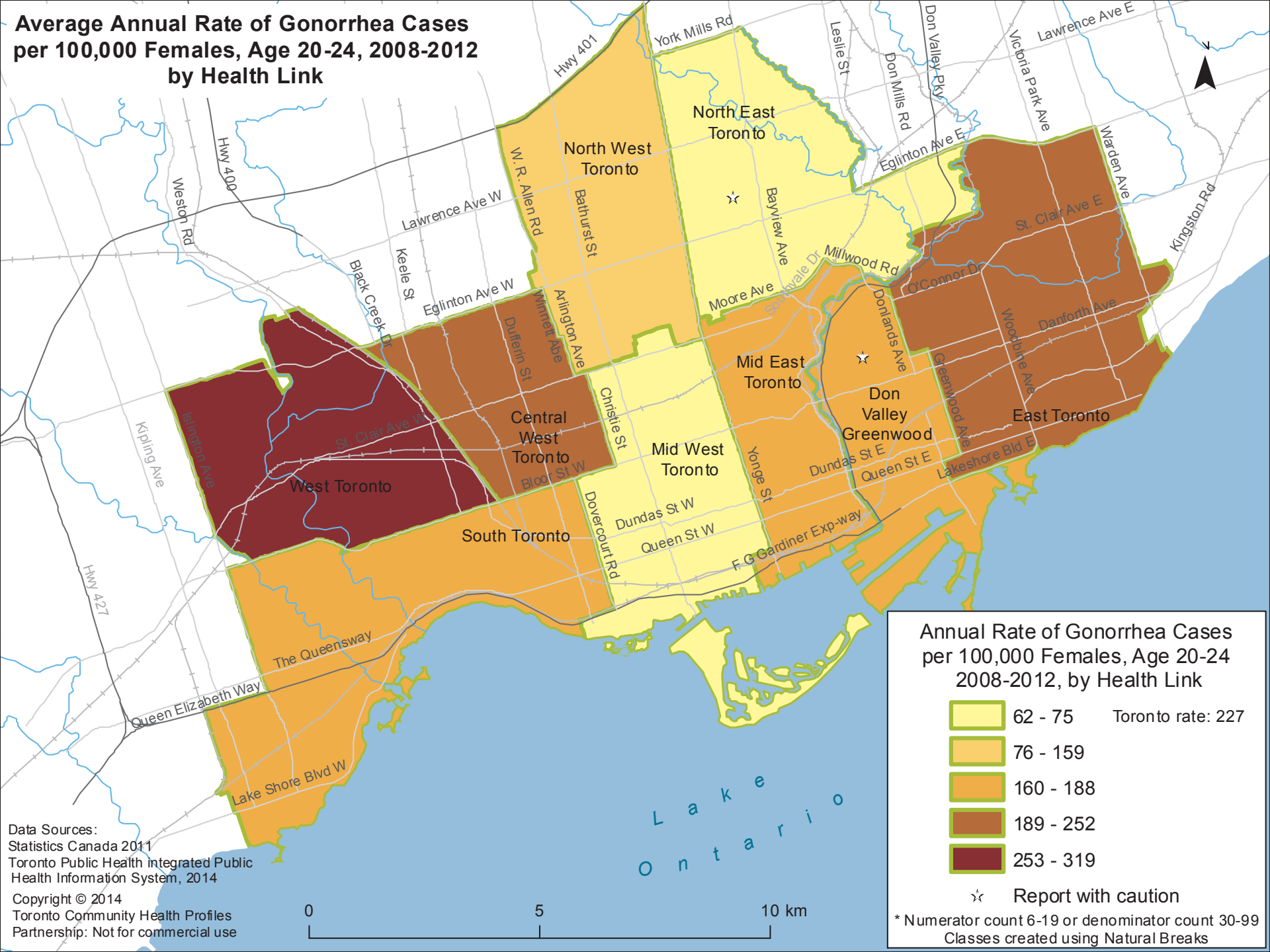
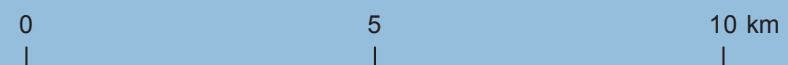


# Average Annual Rate of Gonorrhea Cases per 100,000 Females, Age 20-24, 2008-2012 by Health Link



Data Sources:  
 Statistics Canada 2011  
 Toronto Public Health Integrated Public Health Information System, 2014  
 Copyright © 2014  
 Toronto Community Health Profiles  
 Partnership: Not for commercial use



**Annual Rate of Gonorrhea Cases per 100,000 Females, Age 20-24 2008-2012, by Health Link**

- 62 - 75 Toronto rate: 227
- 76 - 159
- 160 - 188
- 189 - 252
- 253 - 319

☆ Report with caution  
 \* Numerator count 6-19 or denominator count 30-99  
 Classes created using Natural Breaks