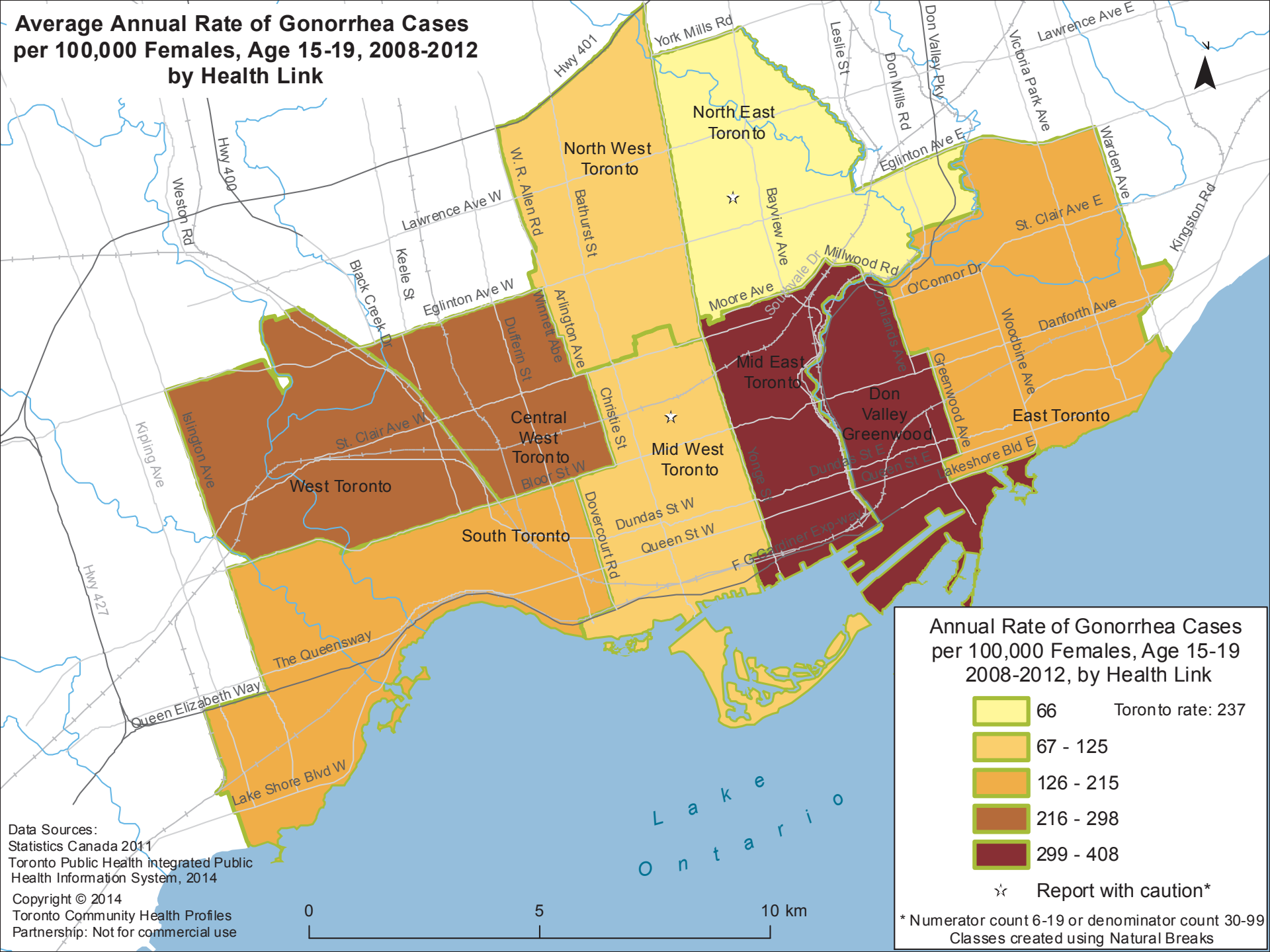


Average Annual Rate of Gonorrhea Cases per 100,000 Females, Age 15-19, 2008-2012 by Health Link



Annual Rate of Gonorrhea Cases per 100,000 Females, Age 15-19 2008-2012, by Health Link

	66	Toronto rate: 237
	67 - 125	
	126 - 215	
	216 - 298	
	299 - 408	

☆ Report with caution*

* Numerator count 6-19 or denominator count 30-99
Classes created using Natural Breaks

Data Sources:
 Statistics Canada 2011
 Toronto Public Health Integrated Public Health Information System, 2014
 Copyright © 2014
 Toronto Community Health Profiles Partnership: Not for commercial use

