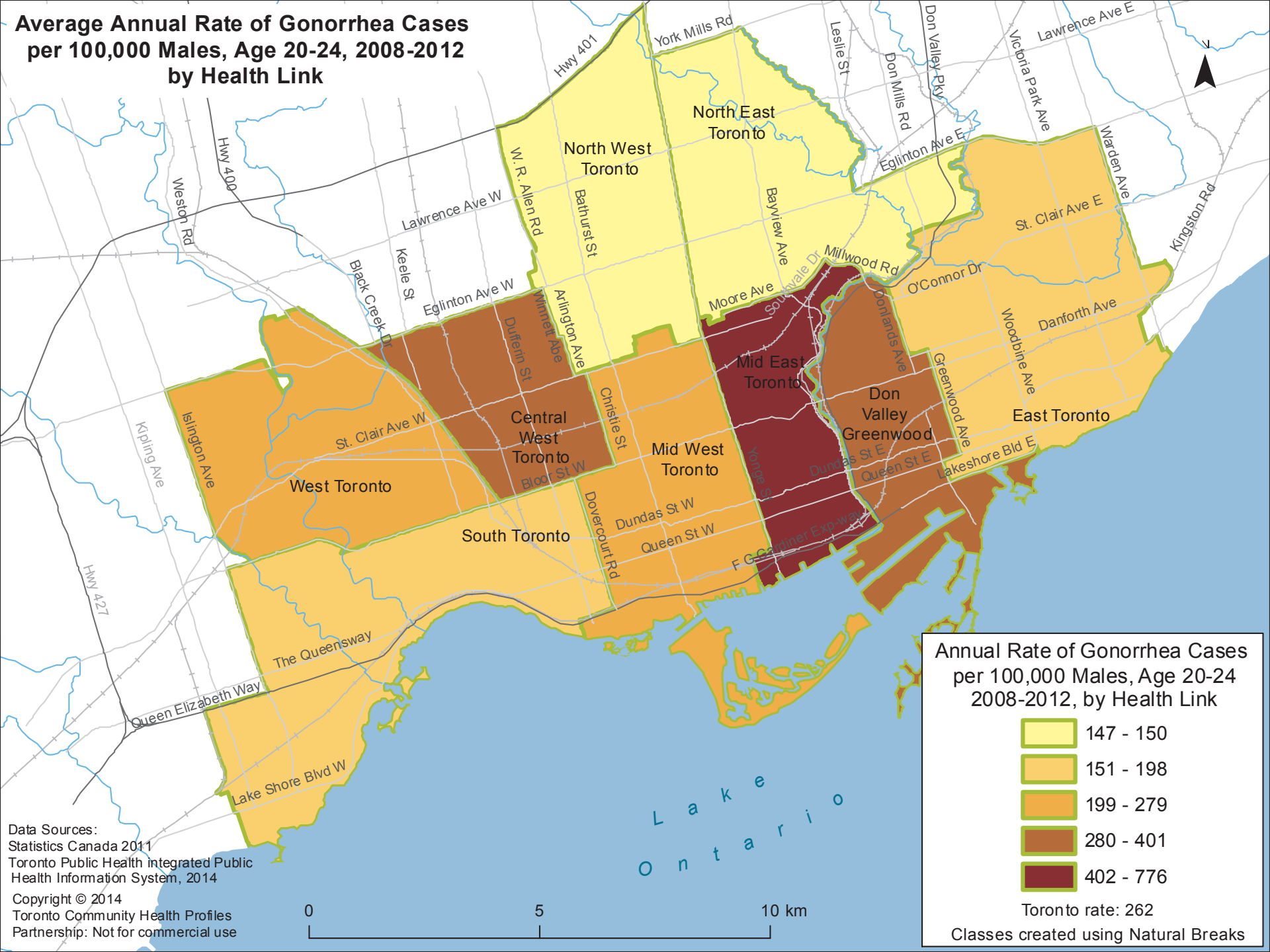


Average Annual Rate of Gonorrhea Cases per 100,000 Males, Age 20-24, 2008-2012 by Health Link



Annual Rate of Gonorrhea Cases per 100,000 Males, Age 20-24 2008-2012, by Health Link

- 147 - 150
- 151 - 198
- 199 - 279
- 280 - 401
- 402 - 776

Toronto rate: 262

Classes created using Natural Breaks

Data Sources:
 Statistics Canada 2011
 Toronto Public Health Integrated Public Health Information System, 2014
 Copyright © 2014
 Toronto Community Health Profiles
 Partnership: Not for commercial use

