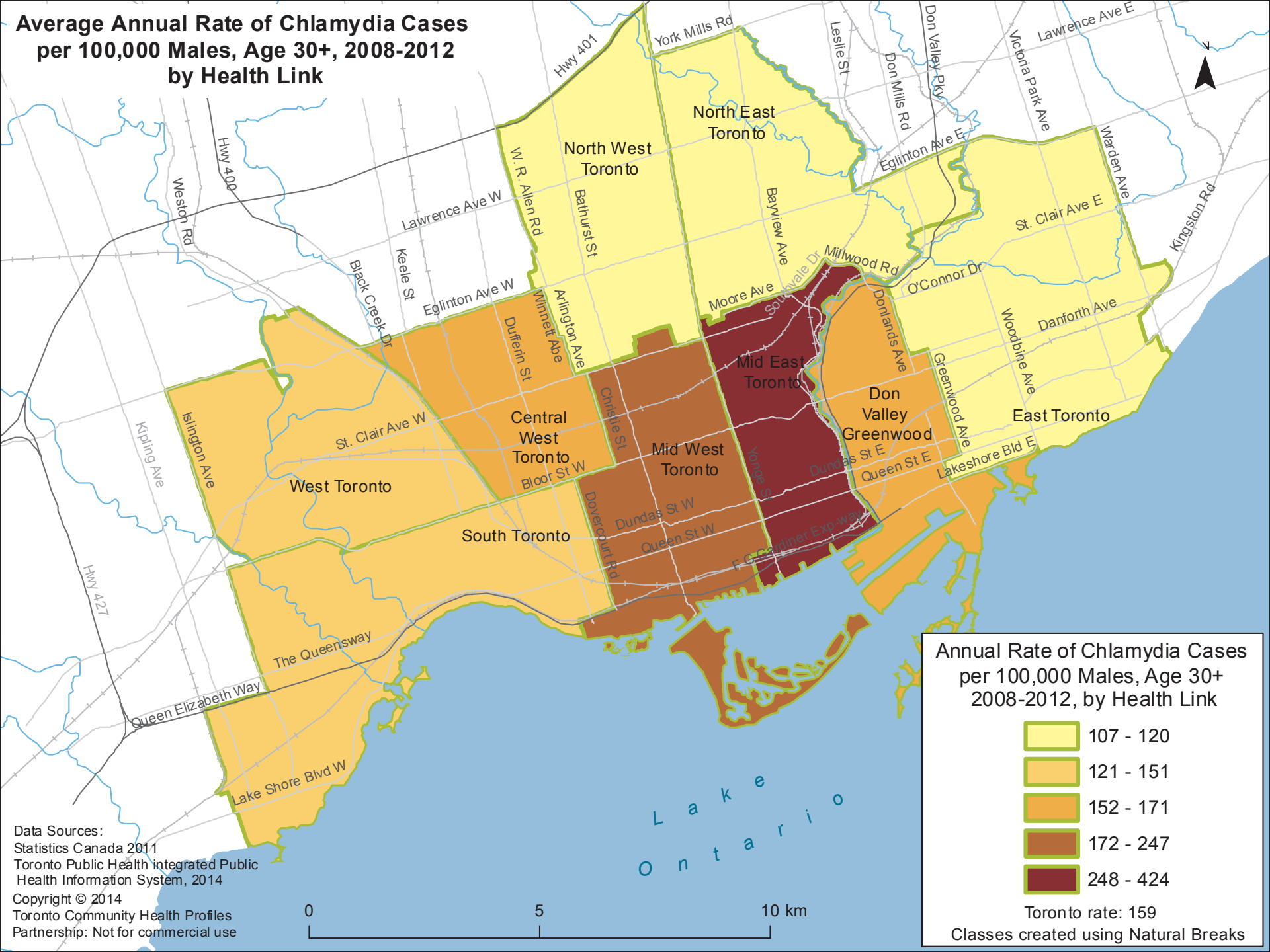


Average Annual Rate of Chlamydia Cases per 100,000 Males, Age 30+, 2008-2012 by Health Link



Annual Rate of Chlamydia Cases per 100,000 Males, Age 30+ 2008-2012, by Health Link

- 107 - 120
- 121 - 151
- 152 - 171
- 172 - 247
- 248 - 424

Toronto rate: 159
Classes created using Natural Breaks

Data Sources:
 Statistics Canada 2011
 Toronto Public Health Integrated Public Health Information System, 2014
 Copyright © 2014
 Toronto Community Health Profiles
 Partnership: Not for commercial use

