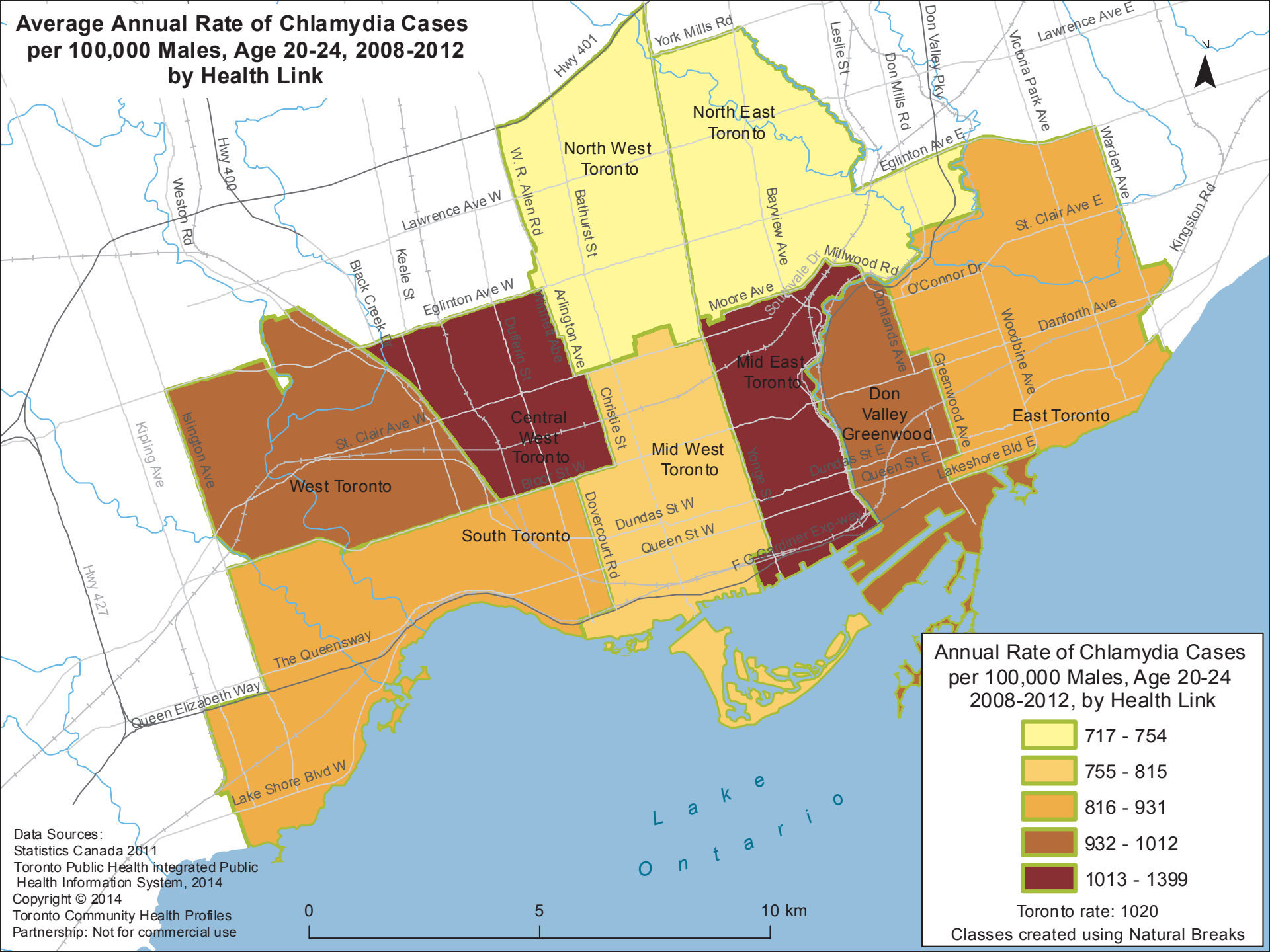


Average Annual Rate of Chlamydia Cases per 100,000 Males, Age 20-24, 2008-2012 by Health Link



Annual Rate of Chlamydia Cases per 100,000 Males, Age 20-24 2008-2012, by Health Link

- 717 - 754
- 755 - 815
- 816 - 931
- 932 - 1012
- 1013 - 1399

Toronto rate: 1020
Classes created using Natural Breaks

Data Sources:
 Statistics Canada 2011
 Toronto Public Health integrated Public Health Information System, 2014
 Copyright © 2014
 Toronto Community Health Profiles
 Partnership: Not for commercial use

0 5 10 km