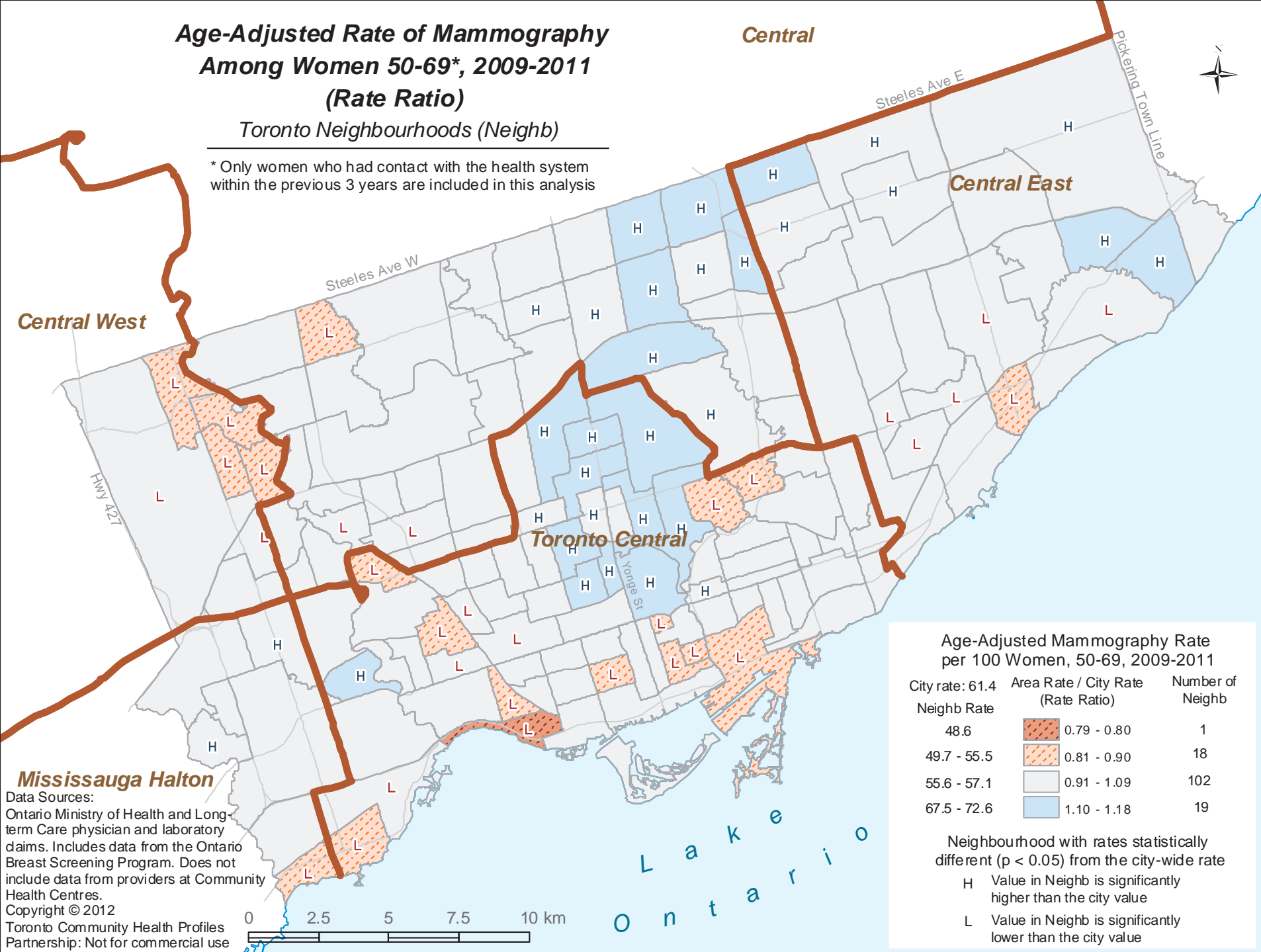


Age-Adjusted Rate of Mammography Among Women 50-69*, 2009-2011 (Rate Ratio)

Toronto Neighbourhoods (Neighb)

* Only women who had contact with the health system within the previous 3 years are included in this analysis



Age-Adjusted Mammography Rate per 100 Women, 50-69, 2009-2011

City rate: 61.4	Area Rate / City Rate (Rate Ratio)	Number of Neighb
Neighb Rate		
48.6	0.79 - 0.80	1
49.7 - 55.5	0.81 - 0.90	18
55.6 - 57.1	0.91 - 1.09	102
67.5 - 72.6	1.10 - 1.18	19

Neighbourhood with rates statistically different ($p < 0.05$) from the city-wide rate

- H Value in Neighb is significantly higher than the city value
- L Value in Neighb is significantly lower than the city value

Mississauga Halton

Data Sources:
Ontario Ministry of Health and Long-term Care physician and laboratory claims. Includes data from the Ontario Breast Screening Program. Does not include data from providers at Community Health Centres.
Copyright © 2012
Toronto Community Health Profiles Partnership: Not for commercial use