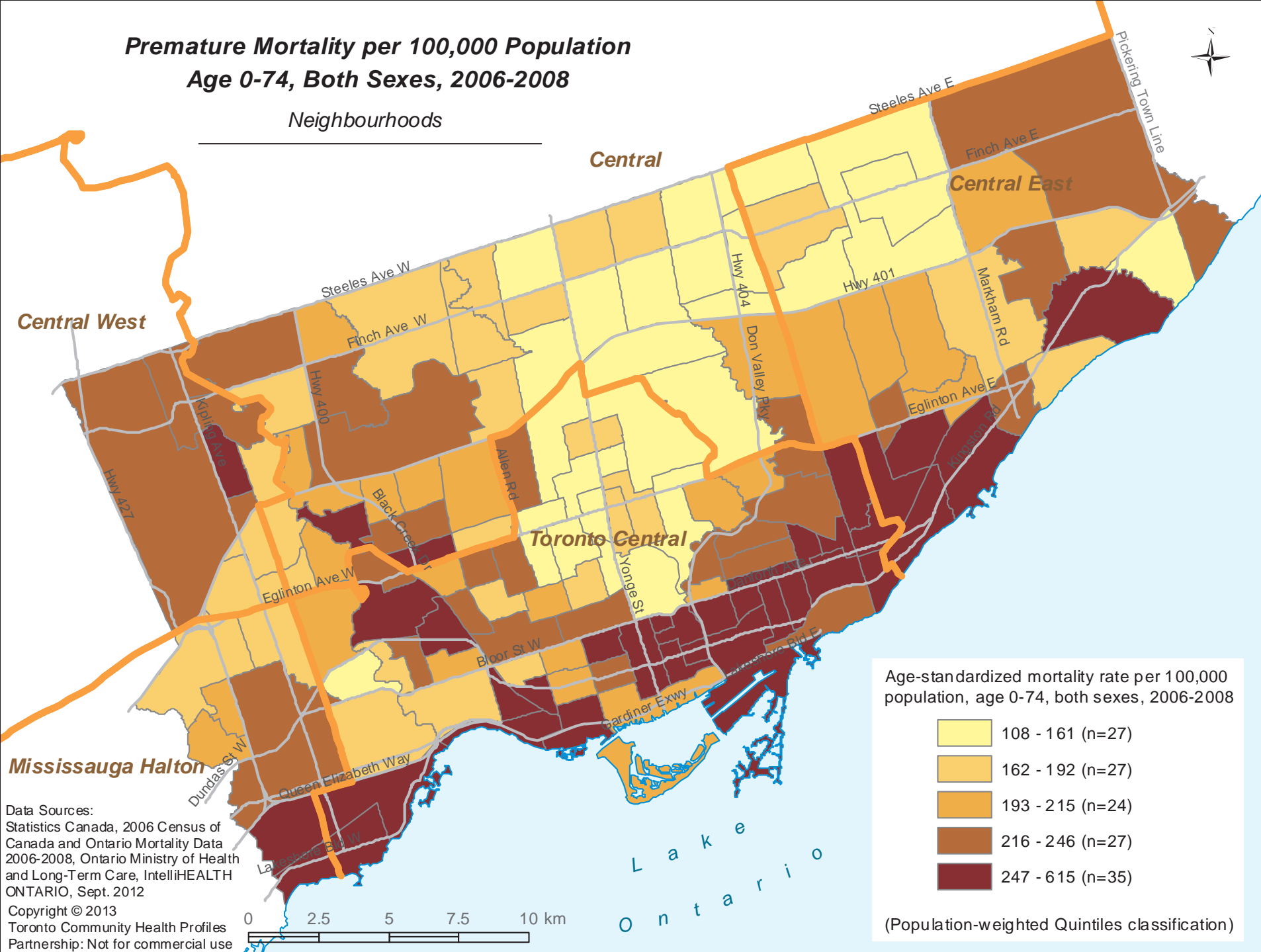


Premature Mortality per 100,000 Population Age 0-74, Both Sexes, 2006-2008

Neighbourhoods



Age-standardized mortality rate per 100,000 population, age 0-74, both sexes, 2006-2008

	108 - 161 (n=27)
	162 - 192 (n=27)
	193 - 215 (n=24)
	216 - 246 (n=27)
	247 - 615 (n=35)

(Population-weighted Quintiles classification)

Data Sources:
 Statistics Canada, 2006 Census of Canada and Ontario Mortality Data 2006-2008, Ontario Ministry of Health and Long-Term Care, IntelliHEALTH ONTARIO, Sept. 2012
 Copyright © 2013
 Toronto Community Health Profiles Partnership: Not for commercial use

