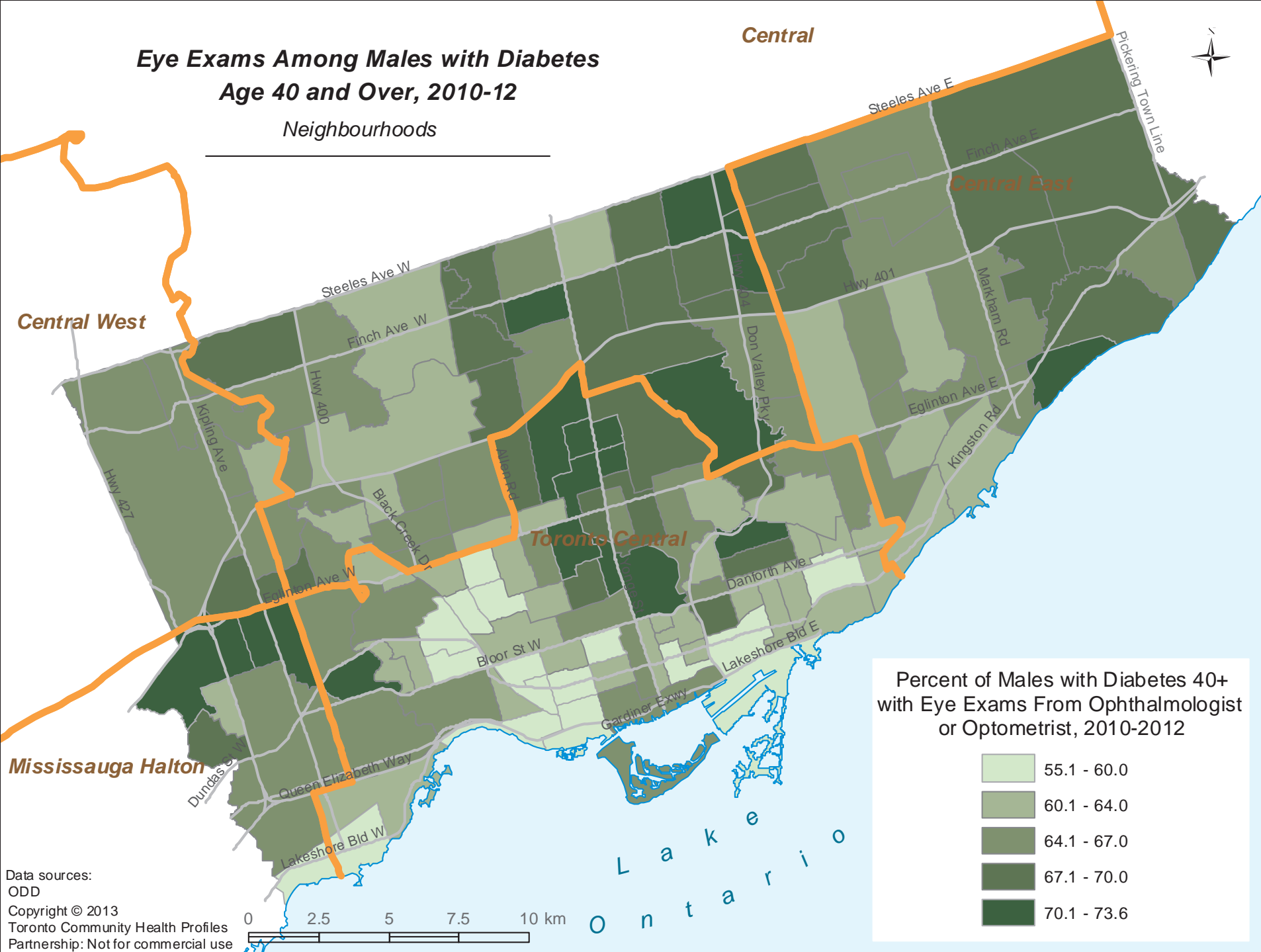


# Eye Exams Among Males with Diabetes Age 40 and Over, 2010-12

Neighbourhoods

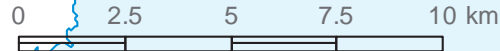
Central



Percent of Males with Diabetes 40+ with Eye Exams From Ophthalmologist or Optometrist, 2010-2012

	55.1 - 60.0
	60.1 - 64.0
	64.1 - 67.0
	67.1 - 70.0
	70.1 - 73.6

Data sources:  
 ODD  
 Copyright © 2013  
 Toronto Community Health Profiles  
 Partnership: Not for commercial use



L a k e  
 O n t a r i o