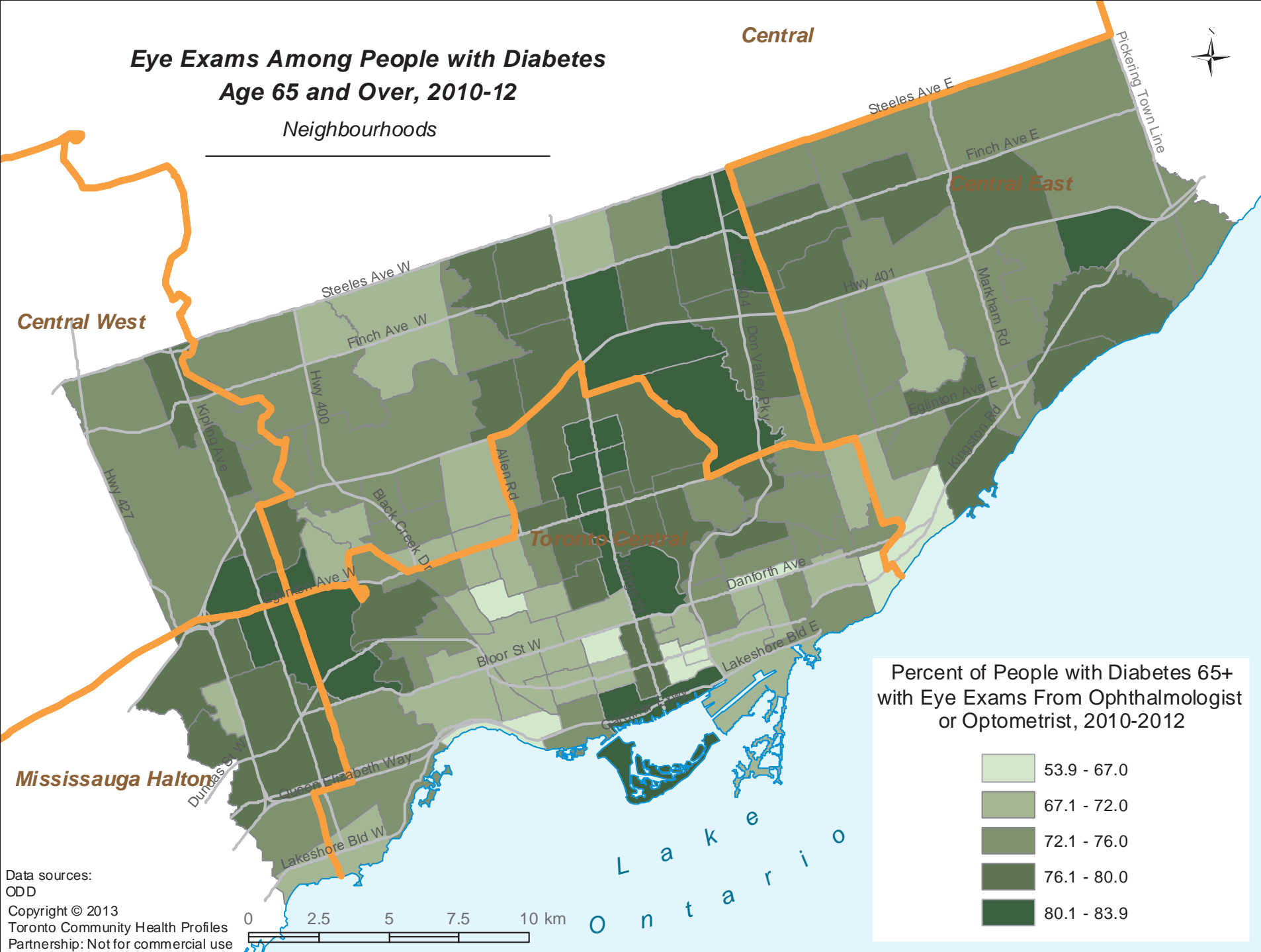


Eye Exams Among People with Diabetes Age 65 and Over, 2010-12

Neighbourhoods

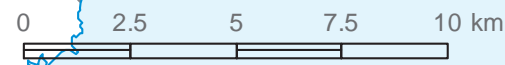
Central



Percent of People with Diabetes 65+ with Eye Exams From Ophthalmologist or Optometrist, 2010-2012

	53.9 - 67.0
	67.1 - 72.0
	72.1 - 76.0
	76.1 - 80.0
	80.1 - 83.9

Data sources:
 ODD
 Copyright © 2013
 Toronto Community Health Profiles
 Partnership: Not for commercial use



O n t a r i o