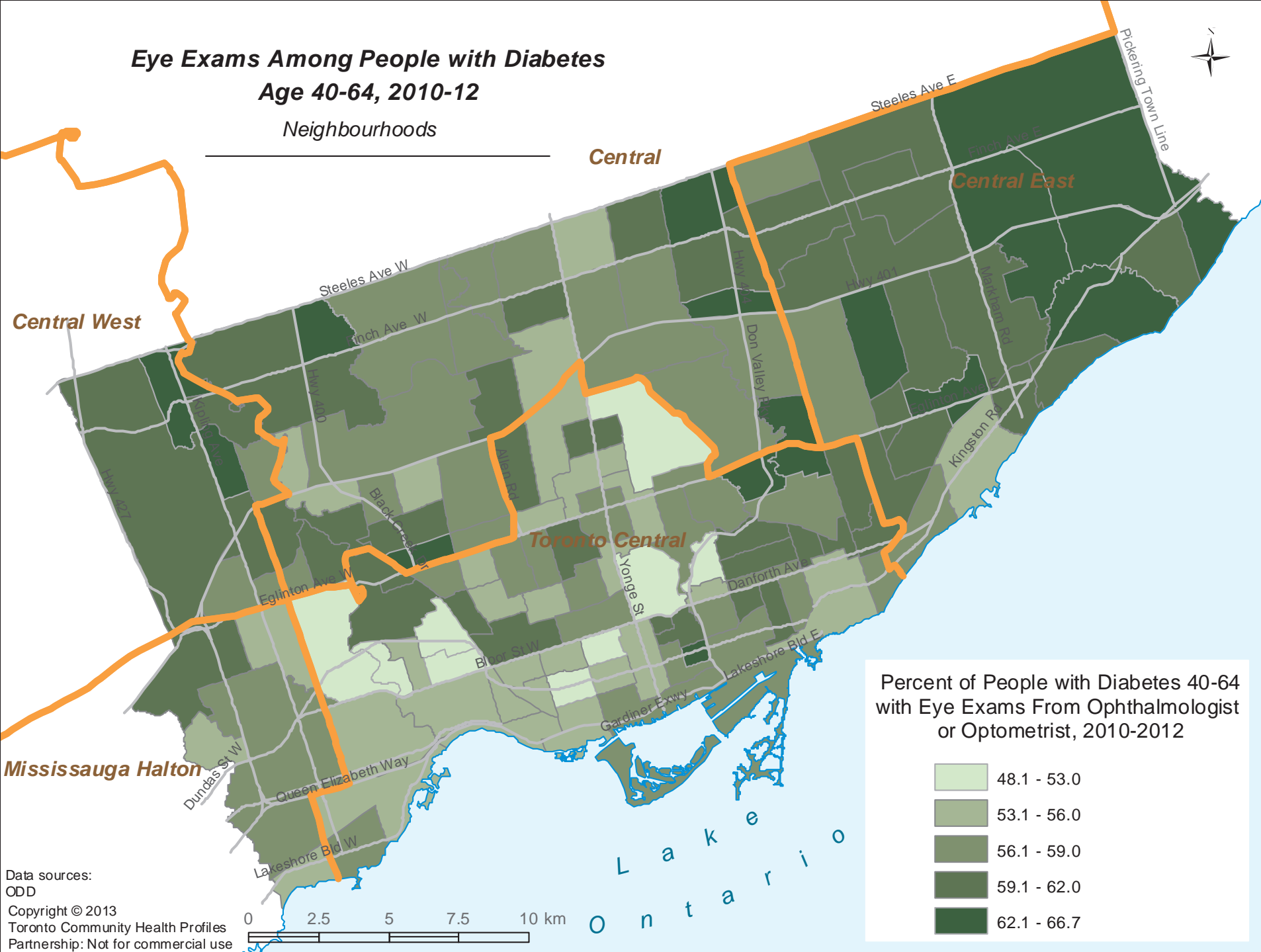


Eye Exams Among People with Diabetes Age 40-64, 2010-12

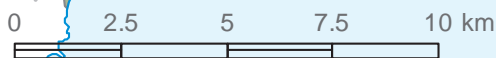
Neighbourhoods



Percent of People with Diabetes 40-64 with Eye Exams From Ophthalmologist or Optometrist, 2010-2012

- 48.1 - 53.0
- 53.1 - 56.0
- 56.1 - 59.0
- 59.1 - 62.0
- 62.1 - 66.7

Data sources:
 ODD
 Copyright © 2013
 Toronto Community Health Profiles
 Partnership: Not for commercial use



O n t a r i o