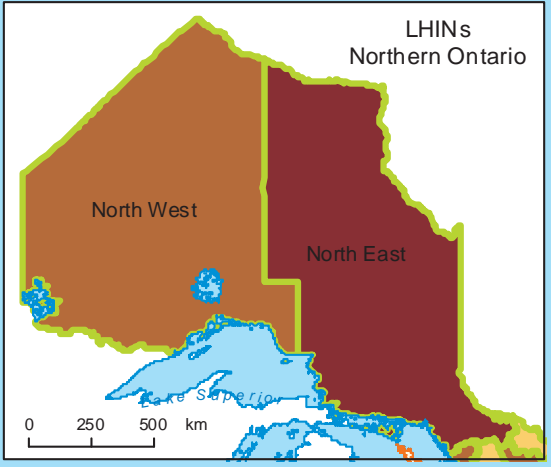
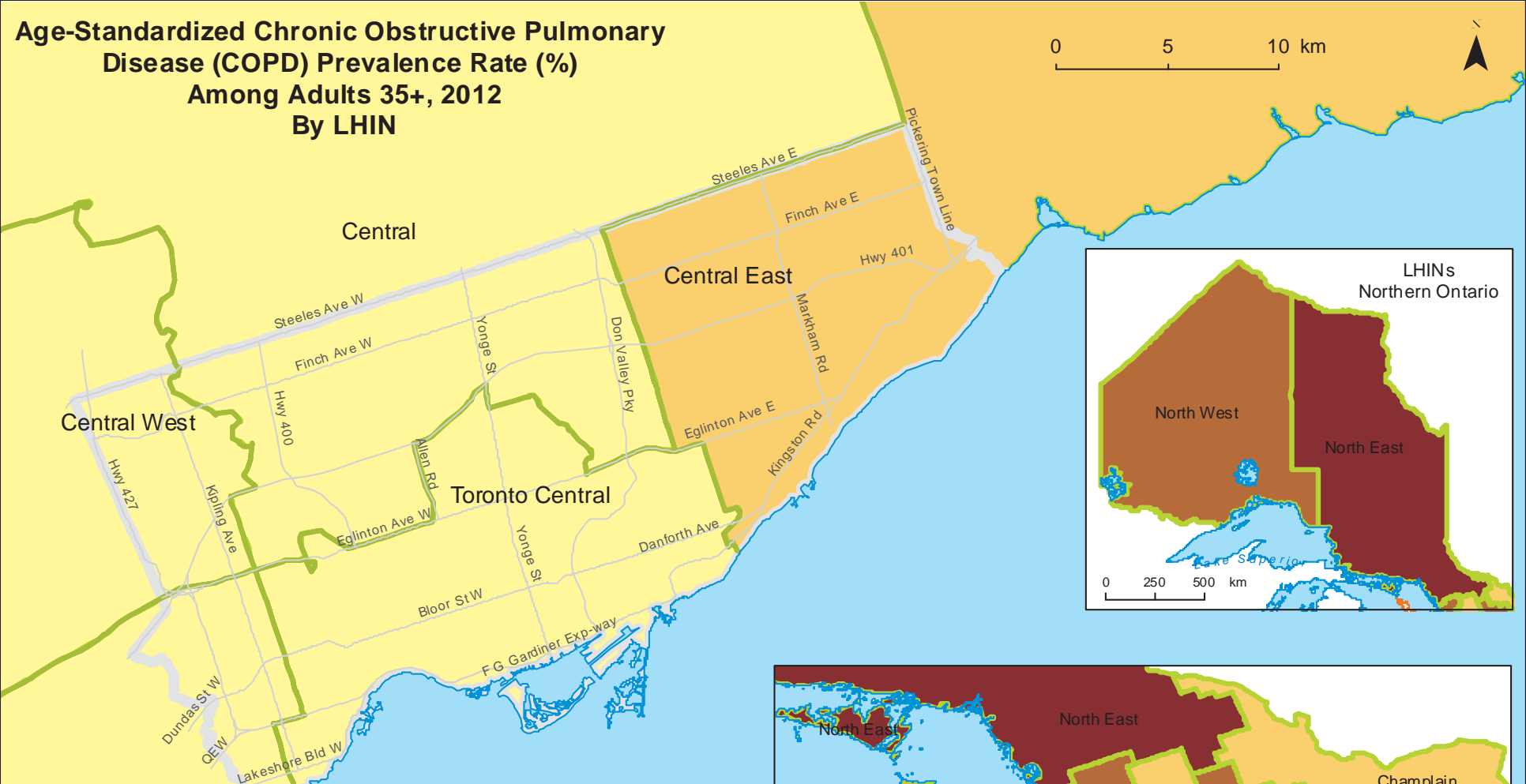
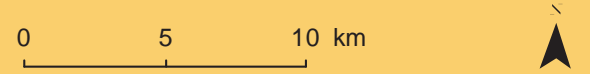
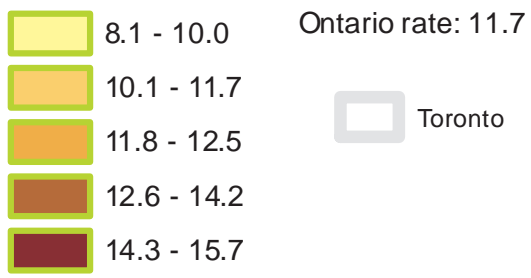


Age-Standardized Chronic Obstructive Pulmonary Disease (COPD) Prevalence Rate (%) Among Adults 35+, 2012 By LHIN

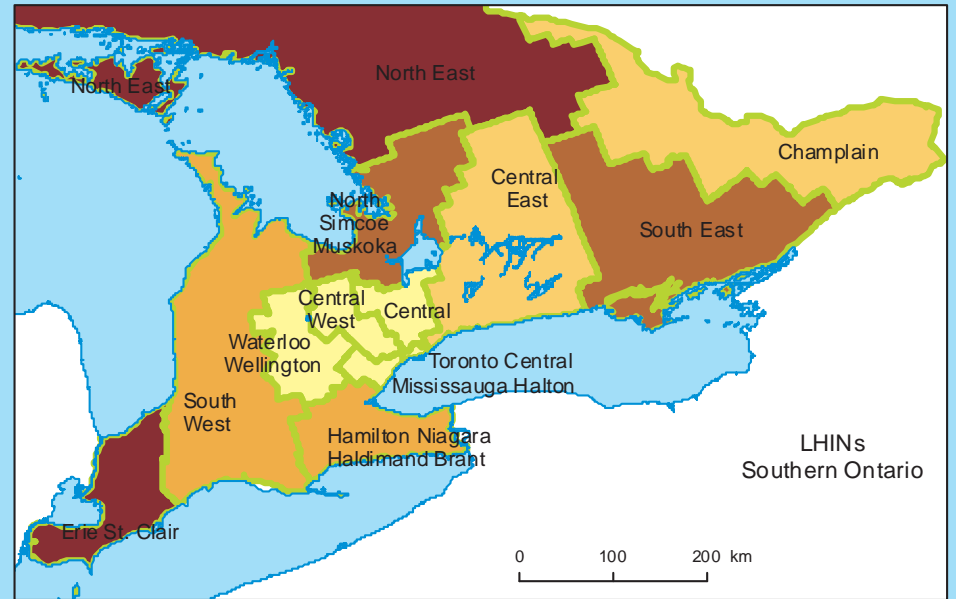


Age-Standardized Chronic Obstructive Pulmonary Disease (COPD) Prevalence Rate (%) Among Adults 35+, 2012



Data Sources:
 Ontario Ministry of Health and Long-Term Care Registered Persons Database (RPDB)
 Institute for Clinical Evaluative Sciences (ICES)
 Copyright © 2015
 Toronto Community Health Profiles Partnership:
 Not for commercial use

Classes created using Natural Breaks



LHINs Southern Ontario