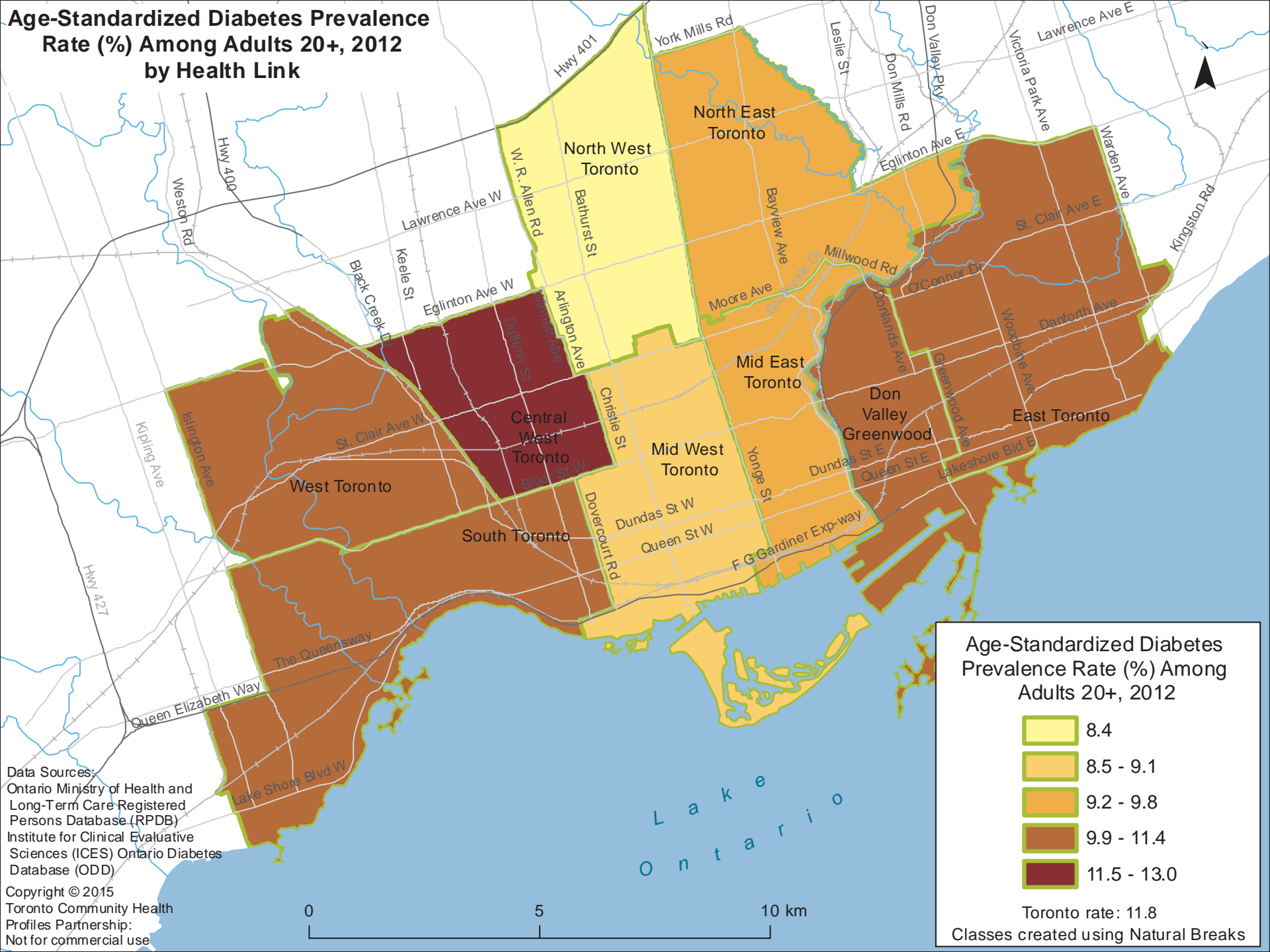


Age-Standardized Diabetes Prevalence Rate (%) Among Adults 20+, 2012 by Health Link



Age-Standardized Diabetes Prevalence Rate (%) Among Adults 20+, 2012

- 8.4
- 8.5 - 9.1
- 9.2 - 9.8
- 9.9 - 11.4
- 11.5 - 13.0

Toronto rate: 11.8
Classes created using Natural Breaks

Data Sources:
 Ontario Ministry of Health and Long-Term Care Registered Persons Database (RPDB)
 Institute for Clinical Evaluative Sciences (ICES) Ontario Diabetes Database (ODD)
 Copyright © 2015
 Toronto Community Health Profiles Partnership:
 Not for commercial use

